

Knowledge base No. 004

01.08.2009

Achim Bentele

Direct PC – AHF connection via Ethernet cable (TCP/IP)

Knowledge base information

Table of Contents

1	PC - AHF connection via Ethernet (TCP/IP)	3
2	Description of Ethernet cable	3
3	Description of PC - network connection settings	4

Version	Date	Change	Changed by
02			
01	27.08.2013	Take over from Technical note No. 007 (rev. b)	Thomas Kolb

1 PC - AHF connection via Ethernet (TCP/IP)

This document describes how to connect your PC/Laptop to ECOsine[®] active by using Ethernet (TCP/IP) connection cable.

After this connection is set-up once, commissioning, parameterization and further diagnostics can be done by using the PC operating program "AHF Viewer".

Download of firmware to ECOsine[®] active is only possible with RS485 connection. **Firmware-update via Ethernet (TCP/IP) is not supported.** More details can be found in [Knowledge base ECOsine active No001 - firmware Versions and Download](#) and the ECOsine[®] active [operating and installation instructions](#), section 6 "AHF Viewer - PC operating program".

2 Description of Ethernet cable

For direct connection between ECOsine[®] active and your PC, please use following patch cable.

1. Ethernet cable, straight through (1:1) connection

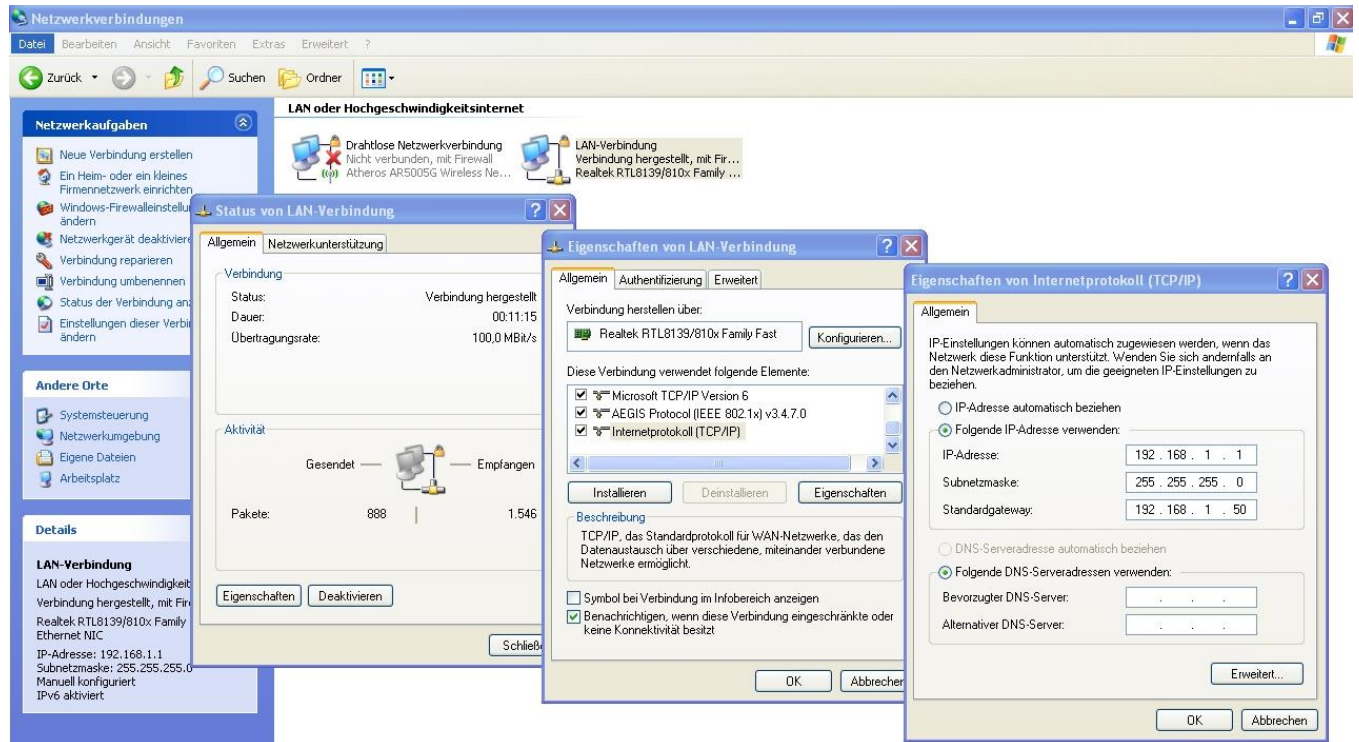


2. 8P8C connector (often called "RJ45" connector)



3 Description of PC - network connection settings

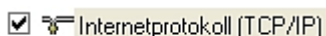
Following settings have to be made in windows operating system:



1. Checkmark Internet protocol (TCP/IP)

>>> start >>> control panel >>> network and internet connections >>> network connections >>> properties >>> **internet protocol (TCP/IP)**

→ Please checkmark **Internet protocol (TCP/IP)**



2. Set IP-address, subnet mask and standard gateway

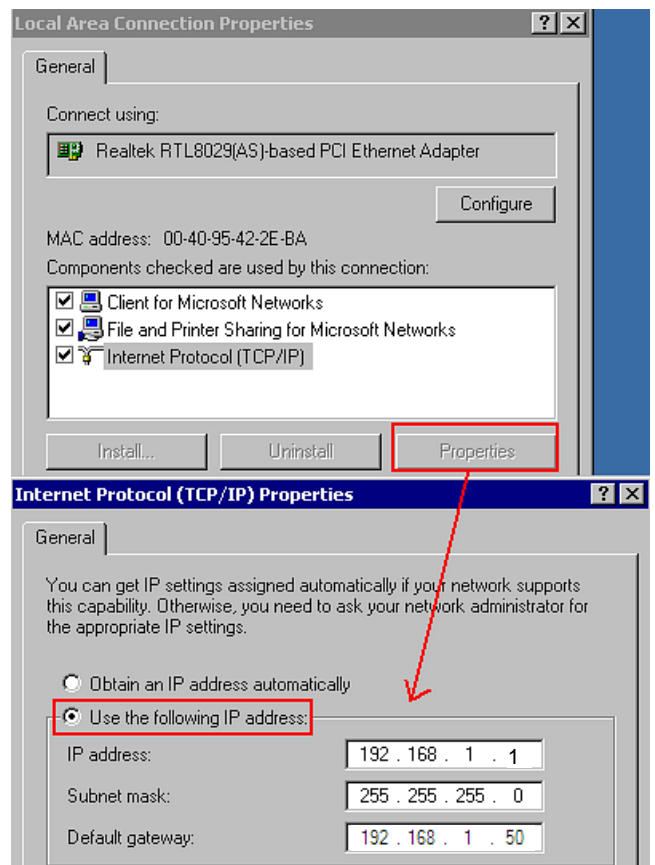
... >>> **internet protocol (TCP/IP)** >>> properties

→ Please checkmark **Use the following IP address**

→ Please set IP-address to 192.168.1.1 (must be different from parameter P240, user manual)

→ Please set subnet mask to 255.255.255.0 (must be equal to P242, user manual)

→ Please confirm with OK-button

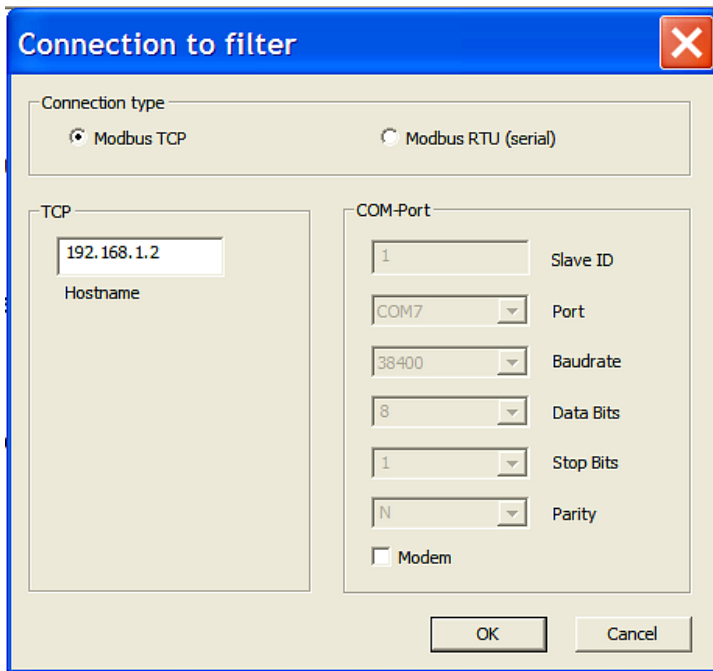


3. Return to ECOsine® active

- Please set Parameter P241 to DHCP=OFF
- Please set Parameter P240 to 192.168.1.2 (factory setting)

4. Return to 'AHF-Viewer'

- >>> Connection >>> Settings...
- Please checkmark connection type **Modbus TCP**
- Please set IP-address to 192.168.1.2



5. Connect to ECOsine® active

- >>> Connection >>> Connect to device

6. After commissioning ECOsine® active

- ... >>> internet protocol (TCP/IP) >>> properties

Please reset all network connection settings of your PC to the previous values!

Generally the Internet Protocol (TCP/IP) Properties will be set to: **Obtain an IP address automatically**